

Code:

HSS00HD

Product:

Hallmark Smoke Rated Hinged Double Door

Fire Resistance Rating (FRR):

-/-sm

Leaf Size & Wall Types

JAMB TYPE	LEAF HEIGHT Max (mm)	LEAF WIDTH Max (mm)
Timber	3500	2400
Steel	3500	2400

Sizes above are maximum depending on height and width ratio

LEAF THICKNESS

38mm as standard

CORE

Solid reconstituted timber core

ACOUSTIC RATING

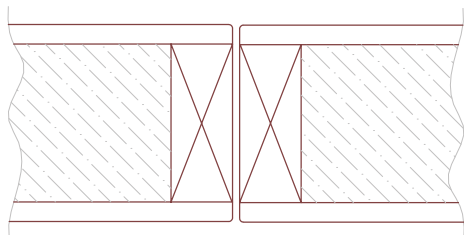
Acoustic rating up to STC 40 is possible with this doorset with the appropriate inlays and seals.

Leaf Facing options

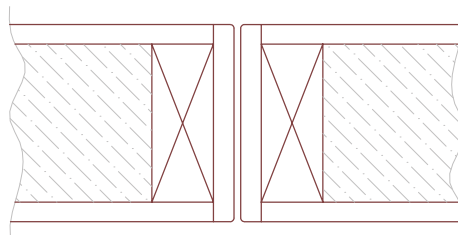
MDF | Hardboard | Plywood | Timber Veneers | Electrogalvanised Steel | HPL | PureMatte

Leaf Edge options

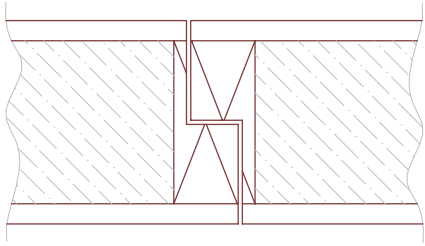
The below leaf edge options are available for this doorset.



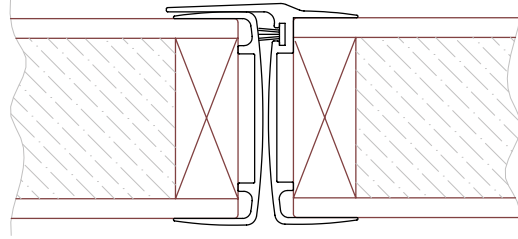
Standard Timber Double (DE12)



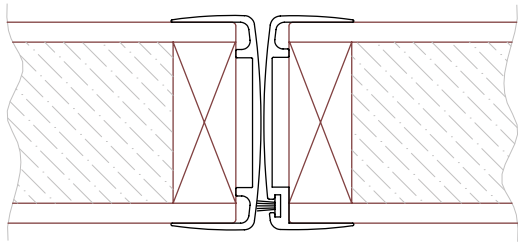
Timber Clashed Double (DE13)



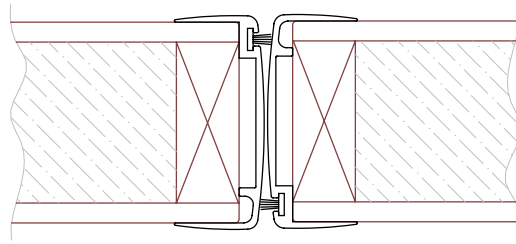
Timber Rebated (DE7)



Aluminium Rebated (DE4)



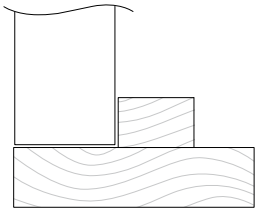
Aluminium Bullnose (DE5)



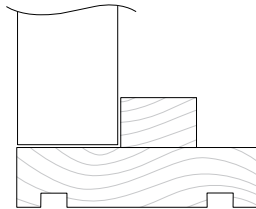
Aluminium Bullnose (DE15)

Door Frame/Jamb options - Timber

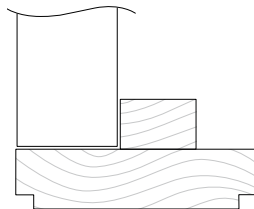
The below pine timber frame options are available for this doorset.



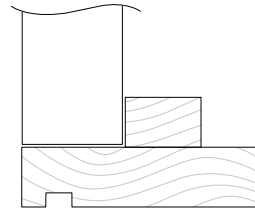
J



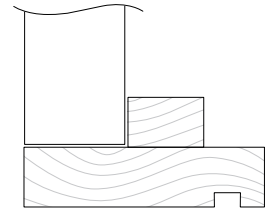
J2



JND



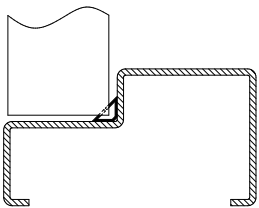
J1D



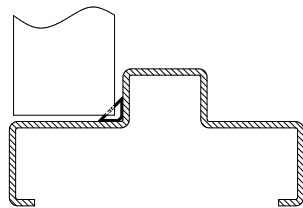
J15

Door Frame/Jamb Options - Steel

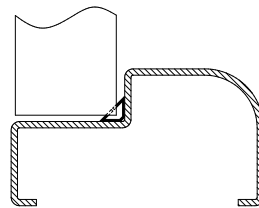
The below steel frame options are available for this doorset.



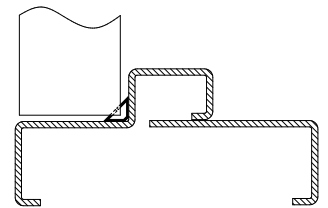
ST1-R1



ST11-R1



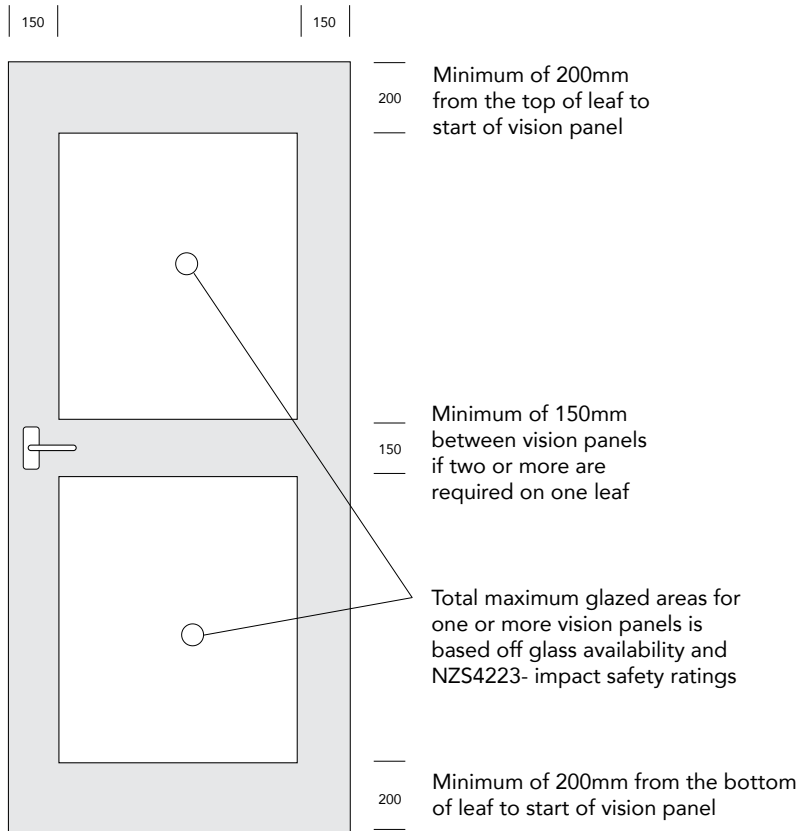
STLR-R1



ST2P-R1

Vision Panels

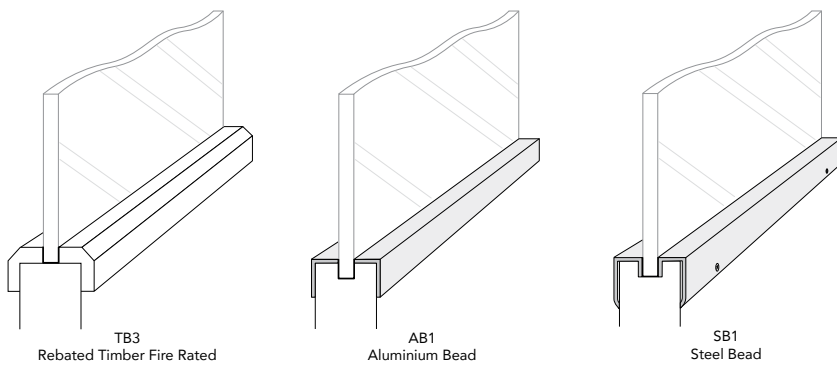
Minimum of 150mm in from the sides of the leaf to start of vision panel



Vision panels must be a minimum of 200mm from the top/bottom of leaf to start of vision panel, and 150mm in from the sides of the leaf to start of vision panel.

Available as square, rectangle, or circle in multiple options as long as the total glazing area doesn't exceed the parameters stated below.

BEADING OPTIONS



SIDE LIGHTS & OVERPANELS

A large range of transom and flush overpanels are available together with sidelights. Contact our technical staff for details.

Technical Compliance

All glazing, if used in this door, also complies with NZS4223.3:2016, which is a human impact safety standard. This door uses FSC-certified pine and FSC-certified eZero MDF.

Our door experts are happy to assist with any queries, so please feel free to phone: 03 313 4754 (or 0800 846 237) or email sales@hallmarkgroup.co.nz