

Code:

HSS00HS

Product:

Hallmark Smoke Rated Hinged Single Door

Fire Resistance Rating (FRR):

-/-sm

Leaf Size & Wall Types

JAMB TYPE	LEAF HEIGHT Max (mm)	LEAF WIDTH Max (mm)
Timber	3500	2400
Steel	3500	2400

Sizes above are maximum depending on height and width ratio

LEAF THICKNESS

38mm as standard

CORE

Solid reconstituted timber core

ACOUSTIC RATING

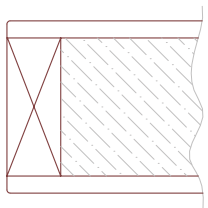
Acoustic rating up to STC 40 is possible with this doorset with the appropriate inlays and seals.

Leaf Facing options

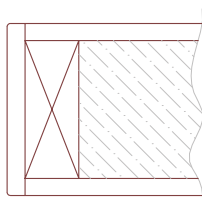
MDF | Hardboard | Plywood | Timber Veneers | Electrogalvanised Steel | HPL | PureMatte

Leaf Edge options

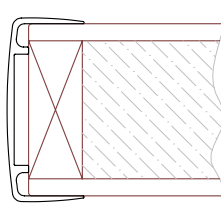
The below leaf edge options are available for this doorset.



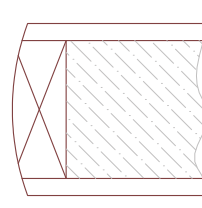
Standard Single (DE1)



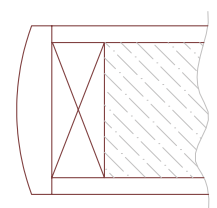
Timber Clashed (DE2)



Aluminium Clashed (DE3)



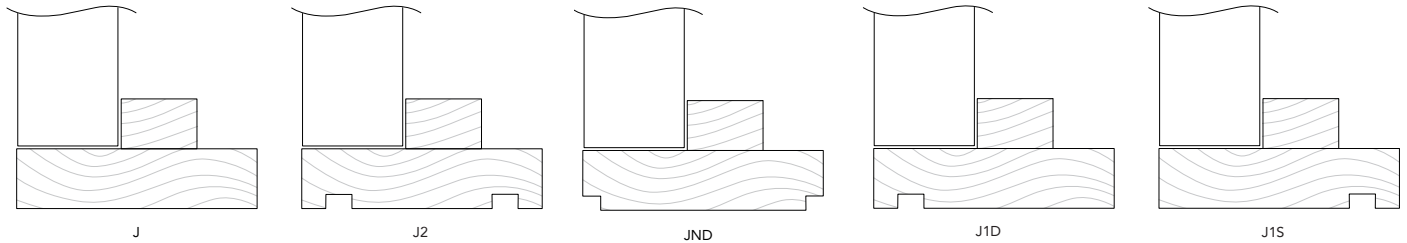
Timber Bullnose (DE11)



Timber Bullnose Clashed (DE14)

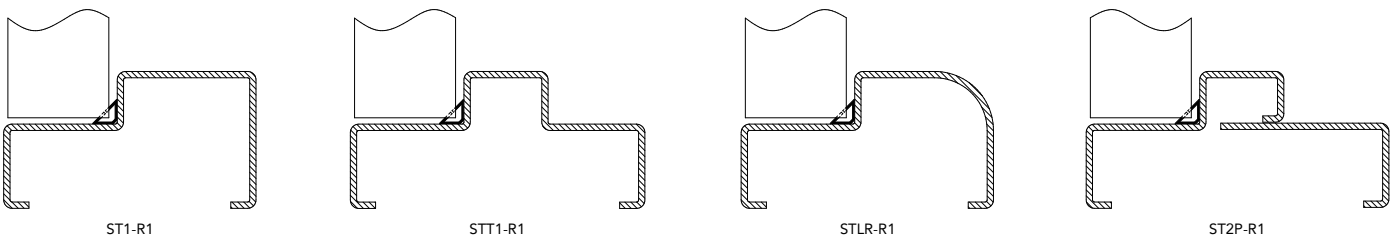
Door Frame/Jamb options - Timber

The below pine timber frame options are available for this doorset.



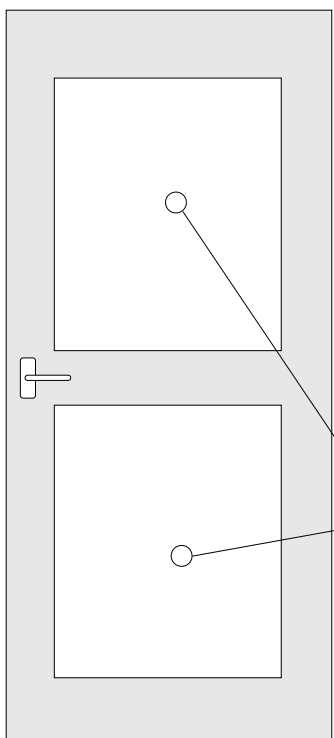
Door Frame/Jamb Options - Steel

The below steel frame options are available for this doorset.



Vision Panels

Minimum of 150mm in from the sides of the leaf to start of vision panel



Minimum of 200mm from the top of leaf to start of vision panel

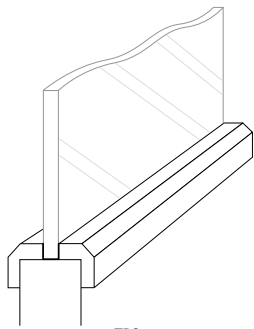
Minimum of 150mm between vision panels if two or more are required on one leaf

Total maximum glazed areas for one or more vision panels is based off glass availability and NZS4223- impact safety ratings

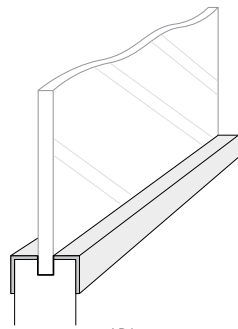
Minimum of 200mm from the bottom of leaf to start of vision panel

Vision panels must be a minimum of 200mm from the top/bottom of leaf to start of vision panel, and 150mm in from the sides of the leaf to start of vision panel.

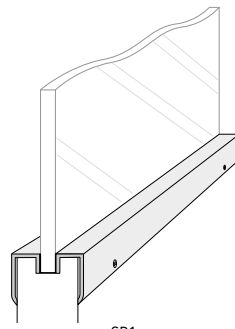
Available as square, rectangle, or circle in multiple options as long as the total glazing area doesn't exceed the parameters stated below.

BEADING OPTIONS

TB3
Rebated Timber Fire Rated



AB1
Aluminium Bead



SB1
Steel Bead

SIDE LIGHTS & OVERPANELS

A large range of transom and flush overpanels are available together with sidelights. Contact our technical staff for details.

Technical Compliance

All glazing, if used in this door, also complies with NZS4223.3:2016, which is a human impact safety standard. This door uses FSC-certified pine and FSC-certified eZero MDF.

Our door experts are happy to assist with any queries, so please feel free to phone: 03 313 4754 (or 0800 846 237) or email sales@hallmarkgroup.co.nz